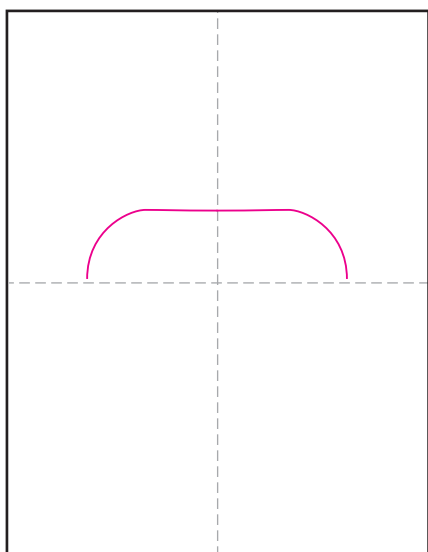
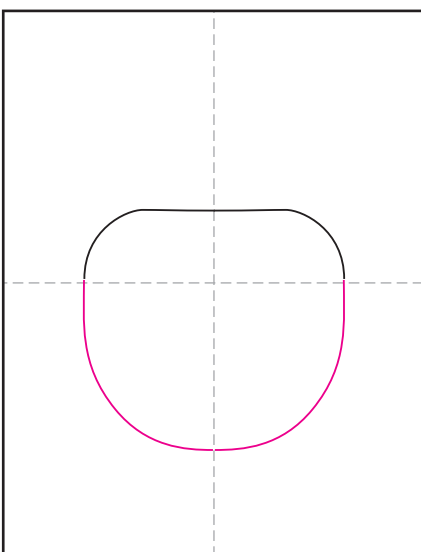


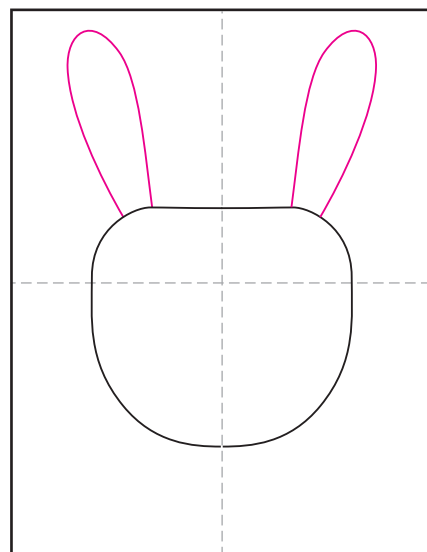
Draw a Cute Bunny Face



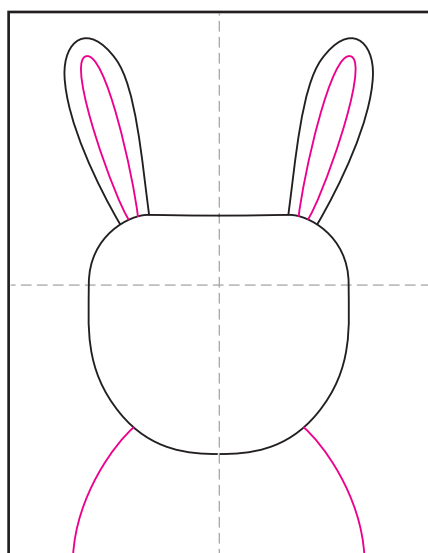
1. Start the top of the head.



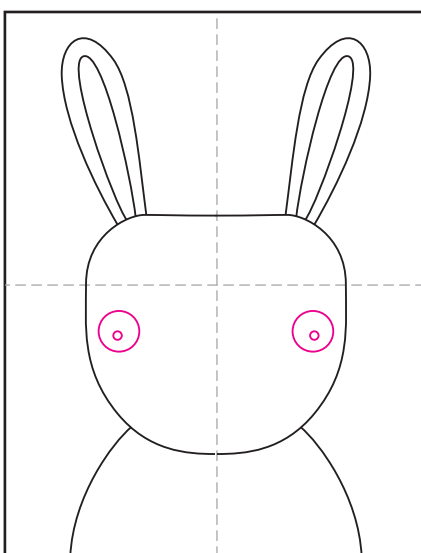
2. Finish bottom of head.



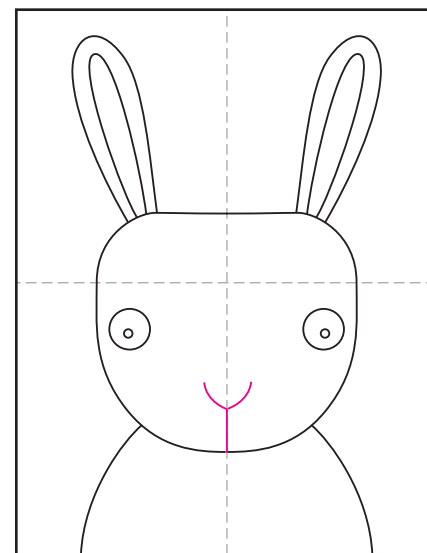
3. Draw two ears.



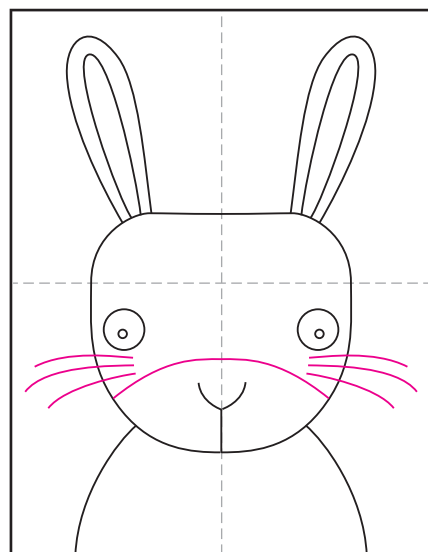
4. Add inside ears and shoulders.



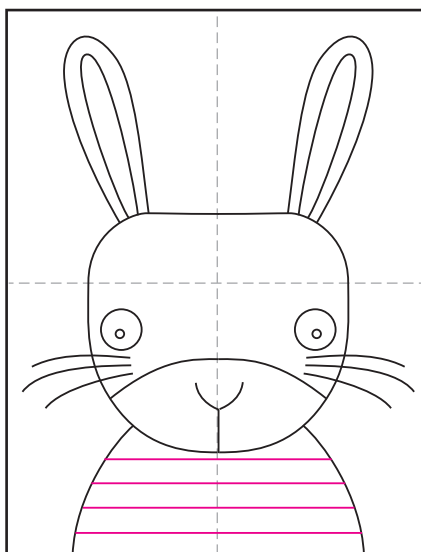
5. Draw eyes and dots inside.



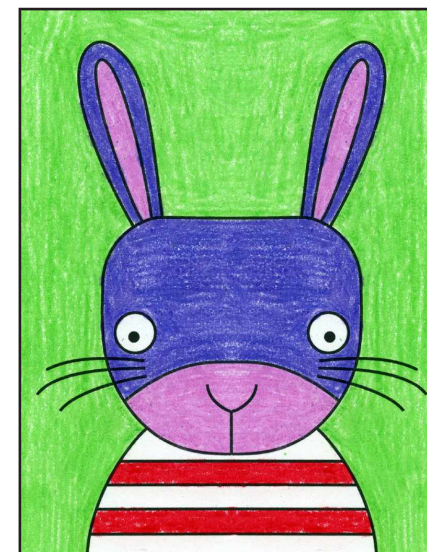
6. Draw the bunny nose.



7. Add nose line and whiskers.



8. Draw stripes on shirt.



9. Trace with a marker and color.

Cute Bunny Face

